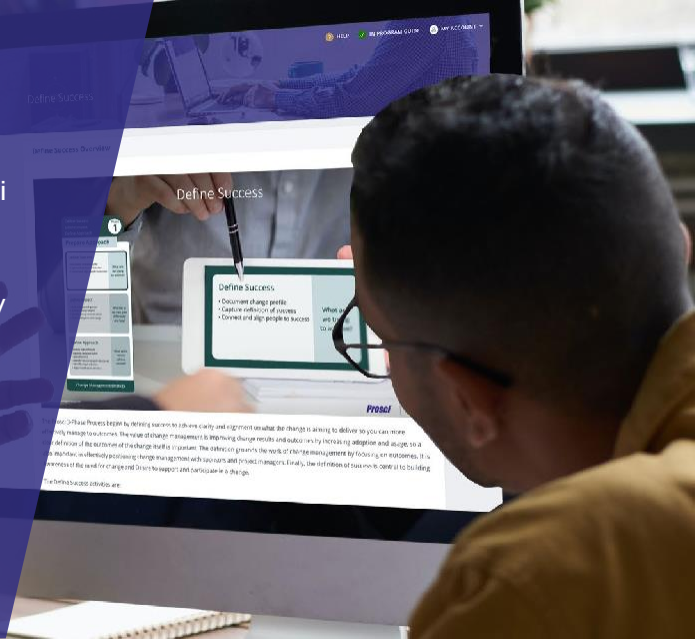


Methodology Application Program

Prosci's Methodology Application Program (MAP), designed for Prosci Practitioner Program graduates, teaches change practitioners how to leverage Prosci's refreshed methodology (enhanced in 2021) for more successful change outcomes. The updated Prosci Methodology is more actionable and accessible, and is supported by advanced digital content, resources and tools available in the new Prosci Hub Solution Suite. During this one-day program, you will learn what's new and the benefits to you and your organization, and what this means for your change management strategy and plans. You will also learn how to apply the new methodology and associated tools to a project.



Who Is This Course For?

This program is for individuals who have attended the Prosci Change Management Certification Program or Prosci Change Management Practitioner Program, and want to:

- Learn about the latest enhancements to the Prosci Methodology
- Understand how to leverage these enhancements to drive more successful change outcomes
- Bring new value to their initiatives, organizations and practice

Learning Objectives

- Learn the more accessible, actionable and effective Prosci 3-Phase Process and plain-language questions
- Assess holistic project health and the definition of project success using the enhanced PCT Model and PCT Assessment
- Evaluate a broader range of risk with easier scoring in the revised Risk Assessment
- Develop a role roster to make it easier to identify and activate change management roles
- Prepare a roadmap to align people-side activities and timelines to your project lifecycle
- Build an ADKAR Blueprint for your project to activate ADKAR and inform and guide your change management plans
- Learn how to flex the number, depth and type of change management plans
- Establish a tracking calendar for monitoring organizational, individual and change management performance
- Jumpstart your project using Proxima, Prosci's new cloud-based web application for guiding and managing change on your project

Have questions? [Contact us](#) to learn more

+234 803 881 499

+44 (0) 203 949 9127

sales@afriissance.com | www.afriissance.com

Agenda

- Overview of the Enhanced Prosci Methodology, Prosci 3-Phase Process, and Plain-Language Questions
- Applying the Latest Tools and Methodology to Your Project – Understanding Key Differences and Benefits Through a Series of Advanced Sprints on:
 - PCT Model
 - 4 P's
 - Define Impact
 - Risk Assessment
 - Role Roster
 - Roadmap
 - ADKAR Blueprint
 - Scalable Plans
 - Tracking Calendar
- Prosci 3-Phase Process Deliverables
- Knowledge Hub and Resource Hub Tours

Course Materials

- One-year subscription to digital content, resources and tools in the Prosci Hub Solution Suite, including:
 - Research Hub – *Best Practices in Change Management – 12th Edition*, topical studies, and relevant data across a broad array of topics
 - Knowledge Hub – Practitioner Program
 - Proxima



Afrissance
Transformation delivered!

Prosci